
Challenges to site selection from the communities' perspective

Nuclear Waste: the challenge of Interim storage and Long term disposal

London 27 september 2010

Municipality of Östhammar, Sweden

Jacob Spangenberg, mayor

The County of Uppsala



The municipality of Östhammar



**ÖSTHAMMARS
KOMMUN**
- PART OF ROSLAGEN

The Municipality of Östhammar...

- Population: 21.500
- 120 km north of Stockholm
- 70 km from Uppsala University
- 1000 islands
- 4000 km shoreline
- More than 5000 holiday cottages



Leading businesses...



Forsmark

nuclear power plant,
more than 1000 employees

Sandvik Coromant AB,
metal working industry
~1650 employees



Business structure...



- Hargshamn Harbour, freight
- Dannemora Mineral AB, mining
- 95 % less than 5 employees
- Tourism

Heritage of the Wallons...



Foundation for a trustworthy process, four important things...



Legal framework...

Industry/SKB

The national authority/SSM

The Environmental court

The municipality and the local public

The government

Foundations for a trustworthy process, four important things...

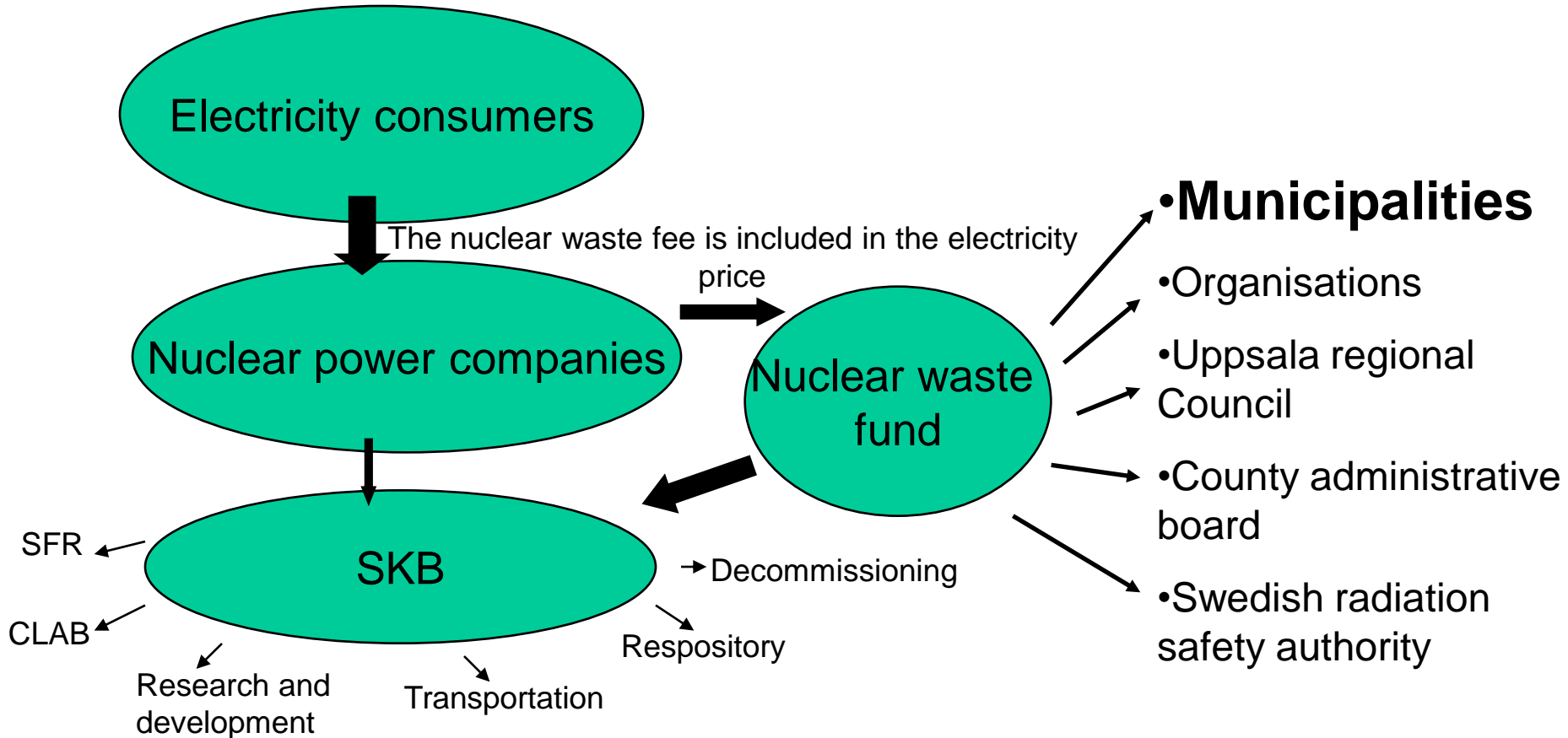
1. Legal framework

2. Financing



Nuclear Waste fund...

The Government sets fees based on SSM's proposal



Foundations for a trustworthy process, four important things...

1. Legal framework

2. Financing

3. Knowledge and awareness



Knowledge and awareness...

- "In House" Municipal organisation in the perspective of role and responsibility. Activities like seminars, study visits, review
- Information to and consultation with the inhabitants, for example through the web-site, brochures, information meetings, seminars
- Socioeconomic studies, for example EU and other countries waste, local supply study-goods & services, local business environment

Foundations for a trustworthy process, four important things...

1. Legal framework

2. Financing

3. Knowledge and awareness

4. Openness and transparency



Openness and transparance...

- Between SKB and the municipalities
- Between the authorities and the municipalities
- Within the municipality
- Towards the public

Foundations for a trustworthy process, four important things...

1. Legal framework
2. Financing
3. Knowledge and awareness
4. Openness and transparency

Added values - The Swedish way...

Two municipalities taking responsibility
for a national problem



A comprehensive work during 15 years

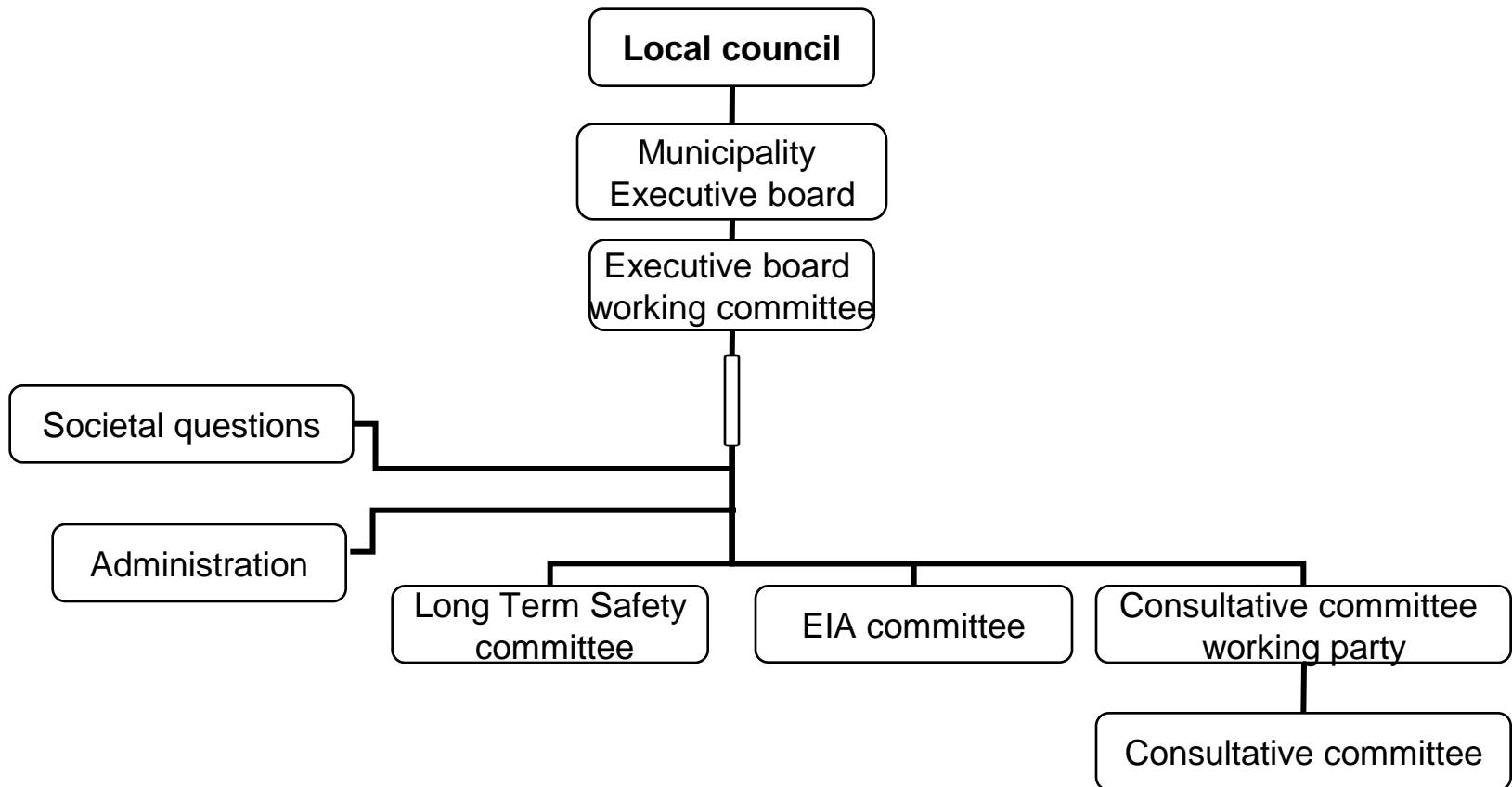


Contribute to the development of the
municipalities



Win-win

Review organisation...



Main political considerations for the municipality...

- Long term safety
- Environmental impact
- Health effects
- Socioeconomic aspects



The bedrock



The environment



The society

Conclusions...

- Building trust takes time
- To communicate and to participate
- The process is as important as the content
- Realistic timetable
- Predictable process
- Openness and transparency

Finally...



Thank you for listening and welcome to contact us
further on the following adress:

slutforvarsenheten@osthammar.se

www.osthammar.se